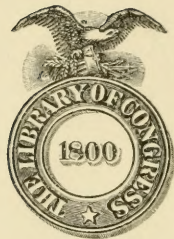


F 549
.K2 S6
Copy 1

Souvenir of Kankakee, Illinois.

Kankakee, 1891.



Class F 549

Book . K 2 S 6

Copyright N^o _____

COPYRIGHT DEPOSIT.

Souvenir of
* * *

KANKAKEE, ILL.

INDELIBLE PHOTOGRAPHS.




The Albertype Co.,
67 & 69 Spring St., N. Y.

Published and Copyrighted, 1891, by
I. W. Powell, Photographer,
282 Dearborn Ave., Kankakee, Ill.

F549

.K256

SKETCH.

HE name Kankakee is a corruption of the Indian name "Ti-yar-acke," meaning wonderland. Kankakee is the county seat of Kankakee Co.; is a city of about 10,000 inhabitants; located 56 miles south of "The World's Fair City" on the Illinois Central, Big Four, Indiana, Illinois & Iowa, Kankakee & Seneca, Kankakee & Southwestern Railways, on river that bears its name.

Among the chief enterprises are Flour Mills, Paper Mill, Shoe Factory, Knitting Factory, Foundry and Machine Shops, extensive Stone Quarries, two Tile and Brick Works, two Transfer Elevators, Tannery, Planing Mill, Ice Factory, Refrigerator Works, Nail Factory, Oil Mills, Furniture Factory, Corrugated Iron Works, Wagon Shops and four Cigar Factories.

Religious and Educational.—Fourteen Churches; Ladies Library Association; Public Schools with 1,200 enrolled pupils; one daily and three weekly papers.

Improvements.—Three Banks; Electric Railway; Electric Fire Alarm with horse fire trucks; uniformed Police; Water Works; Electric Lights; Gas Works; Seven Hotels; Arcade Building and Opera House; new County Asylum; Fair Grounds; Driving Park "Kite Shaped Track;" Free Mail Delivery; Luxuriant Shade Trees; Handsome Residences; \$5,000 Soldiers Monument; Public Fountain; Pleasure Steamer on the river; Co. L. Third Infantry, I. N. G. The healthfulness of Kankakee is an important advantage and should not be overlooked, as shown by the location of the Illinois Eastern Hospital—1,600 inmates and 400 employees—the largest but one in the United States.

As a summer resort, Kankakee has long been known. The new and spacious hotel River View occupies an unusually fine picturesque location, has lately been completed at a cost of \$80,000, will attract guests from far and near. Parties seeking a home should not fail to visit Kankakee, and see its commercial as well as natural advantages of pure air and water, also its industrious population enjoying prosperity and happiness.

City of C. S. May '62



Hotel Riverview.

View from East Side of River.



High Tower and Bath House.



Man Building

EASTERN ILLINOIS HOSPITAL FOR THE INSANE



Residence of Supr. of Farms.



Water and Gas Works.



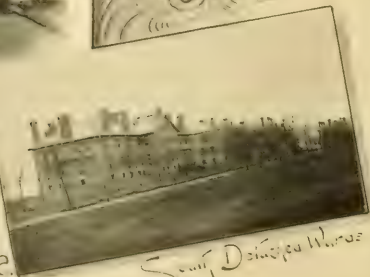
Amusement Hall.



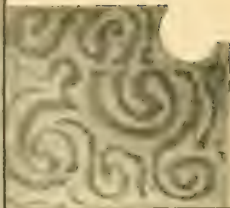
Farm Buildings
Eastern Illinois
Hospital for the Insane.



West Detached Wards
Employees Quarters.



South Detached Wards



Gongar
Grove
up the Kankakee
River.





Archie Johnson



Business Hotel



Barclott house



Apartment House



Hotel Riverview.

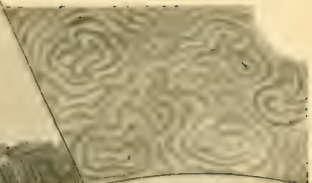


Pleasure Steamers "Minnie Lillie" and "Shaubanee."





John K. Specht Block,
301 East Ave. and Court St.



F. S. Swartzell Block.



E. Powell Block.



View on East Court St.



J. Leccat Building



View on East Avenue.

Kankakee High School



Winery of C. L. ING.



Statue of Liberty



South Side Public School



Kankakee County Court House



First Ward Public School

St. Rose Roman Catholic



St. Paul's Episcopal



Grace M.E.



St. Paul's Evangelical Lutheran



St. Andrew's

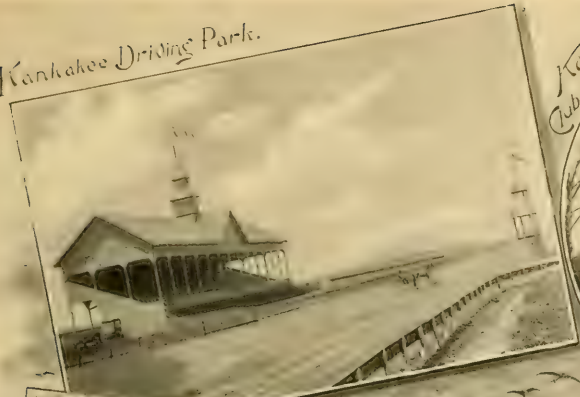
German Evangelical



First Presbyterian

CHURCHES.

Kankakee Driving Park.



Kankakee Club House.



Kankakee Flouring Mills and Water Power.



I. C. R. R. Bridge and Water Bridge.



Souvenir
of
Kankakee

ILL'S

LIBRARY OF CONGRESS.

Chap. F549 Copyright No.

Shelf .K256

UNITED STATES OF AMERICA.

Superior Horse Nail Co.



F.D. Radeke Bros.



Water Tower.



Ponding of Mining Stone Quarries



Feed Store Mill Co.



K.K.K. Elevator Co.



Water Works Pump House.



H.S.I. Elevator Co.



The Kankakee Manufg Co.





J. Lecour.



A. S. S. S. S.



F. S. S. S.



E. P. S. S.



D. S. S. S.



B. S. S. S.



T. S. S. S.



RESIDENCES.



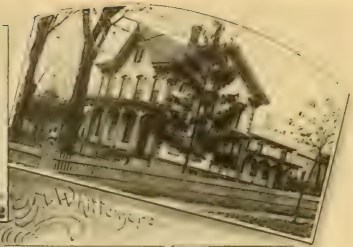
J. S. S. S.



S. B. Burdick



R. G. Pitzer



E. Whittenger



T. W. Adams



C. C. Swannell



H. Brown



D. L. Durham



L. Baker



M. F. Baker

RESIDENCES.



Boston St. Vitalis Church



Perpetual Student St. Vitalis College



Notre Dame Academy (FEMALE)



Rock Creek



Rock Creek Bridge

LIBRARY OF CONGRESS



0 016 098 497 1

